

## **Cable Entry Systems from DDB Unlimited**

### **Cable Entry System**

The cable entry system is designed for inserting cables and electrical conduits through divider walls, junction boxes, control cabinets easily. Install cables and wire quickly while saving space. At DDB we can help you with your cable entries, there are a variety of cable entry systems on the market. At DDB we will add your cutouts needed for your cable entry and add a cable entry system that meet or exceed all NEMA requirements. Most cable entry systems are rated at NEMA 4 and IP66

### **What is a modular cable entry system?**

The modular entry system for pre-assembled cables provides a simple solution for control cabinet cable feed-through. The cable entry system provides a space-saving and cost-saving solution for control cabinet cable feed-through.

### **What is a cable entry plate?**

The cable entry plate system represents a real alternative to cable fittings. Cables can be installed in seconds flat using this system. That represents enormous savings potential, both during panel installation and insertion and feed-through of the cable. Versions are available in plastic, aluminum, or stainless steel.

### **What is a split cable?**

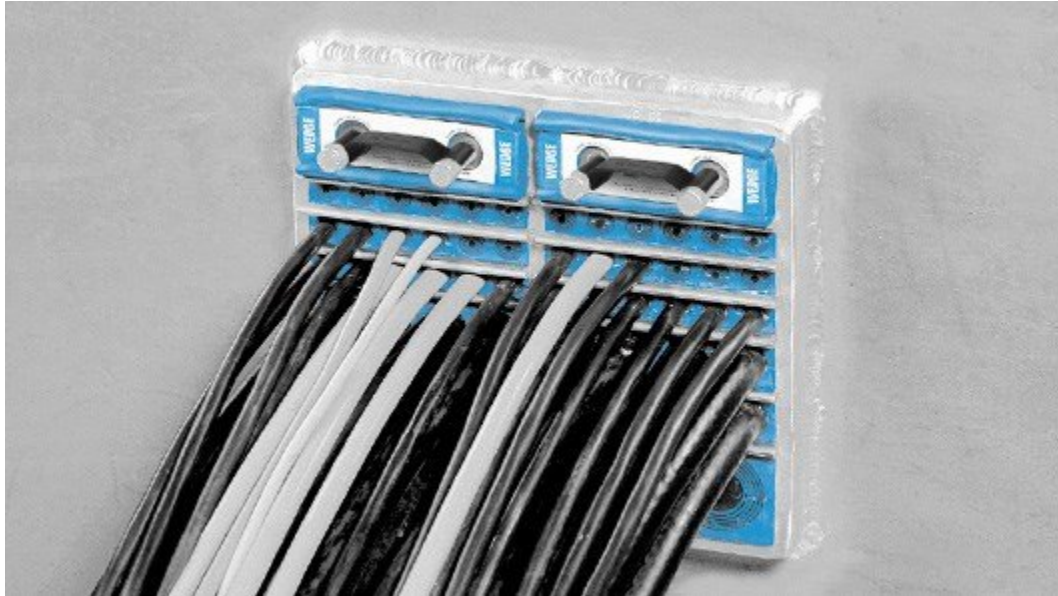
Most split cable entries consist of a split hard frame, made of plastic or sometimes stainless steel (e.g. utilized in food industry) and one or several split sealing grommets, usually made of elastomeric. The grommet matching the cable diameter is placed around the cable and fixed inside.

Traditionally throughout the industry when multiple cables need to be installed into an assembly, with high protection levels, a manufacture would have to drill multiple holes and install the cables through individual cable glands. When using a cable entry system it transforms a labor intensive operation into a labor saving operation. Installing multiple non-terminated cables with various diameters can be easily added to your enclosure cable entry system. With many configurations available in cable entry systems, you should explore the best fit to reduce labor and increase productivity.

At DDB we use Roxtec cable entry systems, when you have DDB modify and install a Roxtec cable entry system we warranty this system for 15 years just like our enclosure warranty!

For additional information on our cable entry systems please follow this link.  
<https://www.ddbunlimited.com/accessories/cable-entry-solutions/>

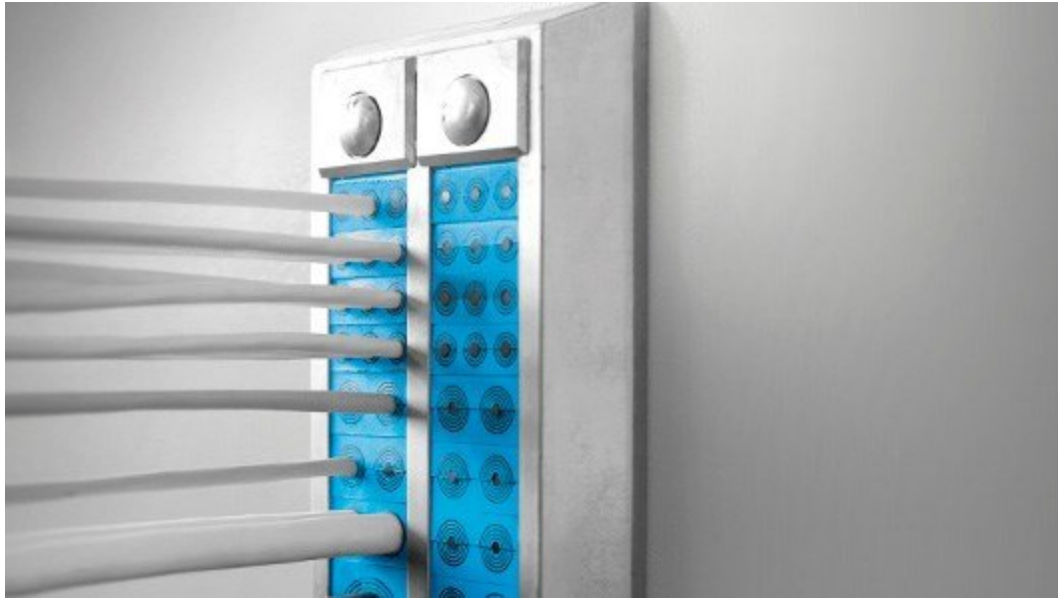
Below pictures of just a few cable entry systems.



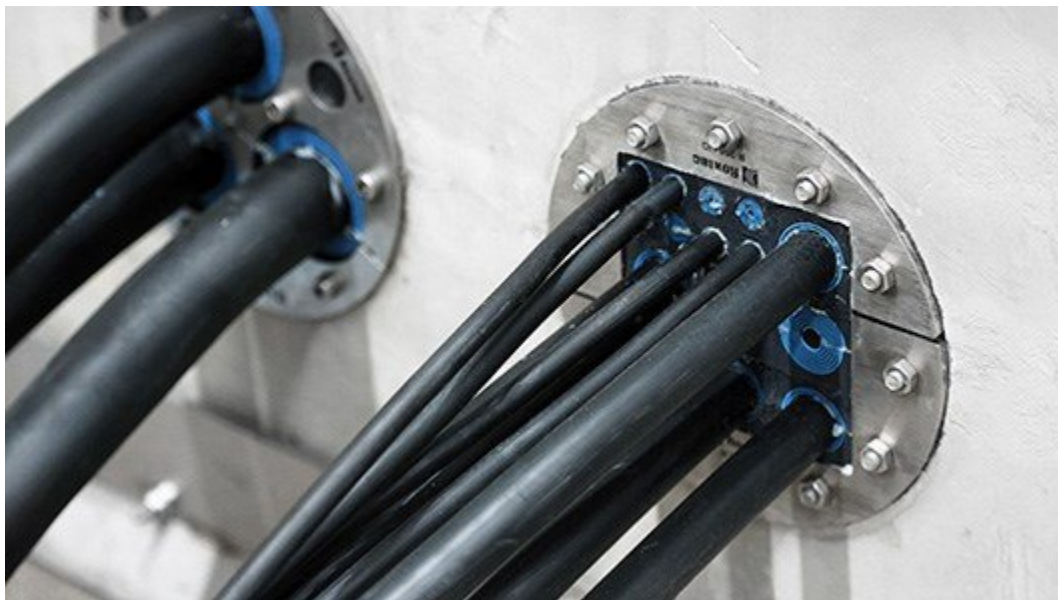
Multi cable/pipe transit



Single cable/pipe transit



Enclosures



Underground